

Swiss TPH



Swiss Tropical and Public Health Institute
Schweizerisches Tropen- und Public Health-Institut
Institut Tropical et de Santé Publique Suisse

Research for Fairness Initiative and its relevance at the national and global level

Marcel Tanner

**Swiss Tropical & Public Health Institute
Swiss Academy of Sciences**

Basel, 26 September 2018





Spirit and attitude: «Mutual Learning for change»

Requirements to keep integrity and social commitment

- Adherence to ethical standards
- Competence (less representation)
- Expertise and Experience of real life «dirty boots»
- Sensitivity to context, equity and diversity «creative listening»
 - Common sense – Openness – Curiosity
 - Way of life and transcultural
 - No “helpers” or aid agencies, therapy-searchers
 - No standardisation, consultants, compliance or M&E experts
- Know / live role and responsibilities within ethical context
- Communication skills
- “Outside” of society but part of it
- **Generate policy relevant statements and no prescriptions**

Approaches for science across systems and cultures ?!?

Good practice - enough ?

Ethical guidelines, GCP, GLP, GMP, GEP....

The KFPE Guidelines: 11 Principles – 20 years

1. Decide on the objectives together
2. Build up mutual trust
3. Share information; develop networks
4. Share responsibility
5. Create transparency
6. Monitor and evaluate the collaboration
7. Disseminate the results
8. Apply the results
9. Share profits equitably
10. Increase research capacity
11. Build on the achievements

Principles – but process!?!





Research Fairness Initiative (RFI)

Provides basis to promote and validate responsible, fair practices in international collaborative research and innovation for health.

Fairness of opportunity

- Relevance of work, «demand-driven»
- Science and science management

Fairness of process

- Partnership principles and
- Engaging in local training, hiring and sourcing

Fairness in sharing of benefits, costs, outcomes

- Context and capacities of health research system
- Expectations of partners

Global Public health - context for science and action

The value chain: From Innovation to Application

Innovation

Validation

Application

Research,
development,
concepts & ideas

Evaluate what
works in field
& real world
conditions

Integration
into health
systems

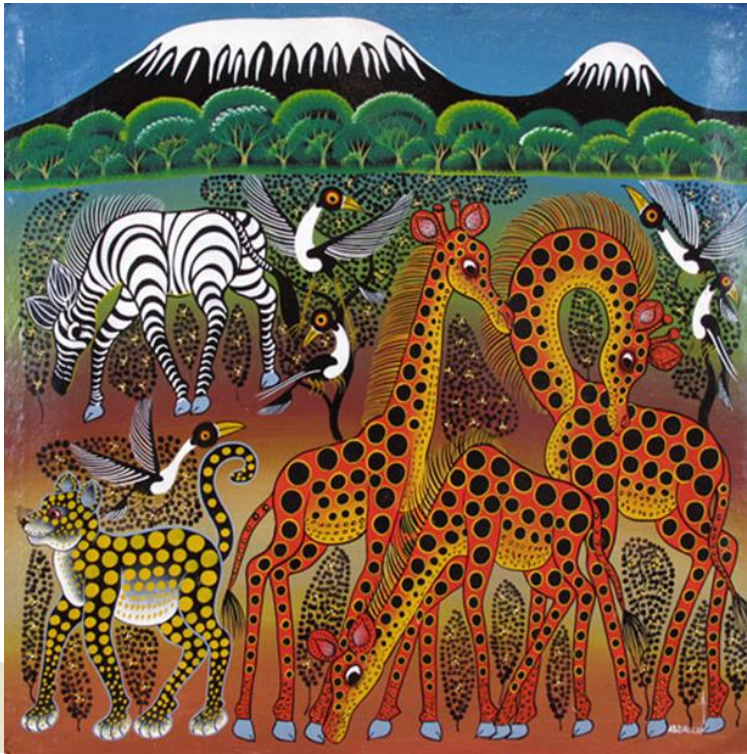
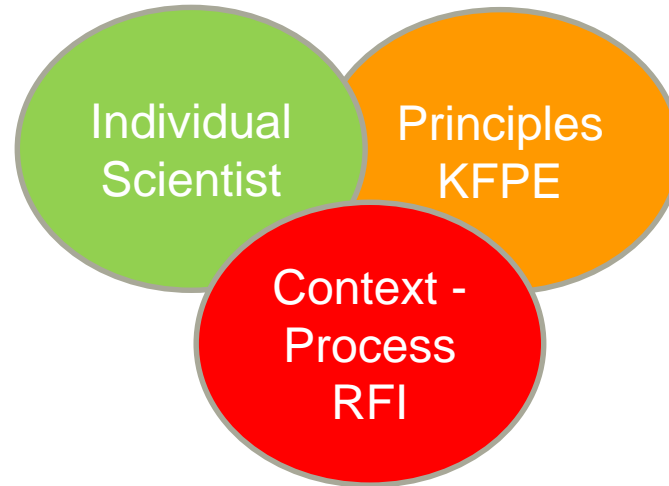
Laboratory Bed Bench Field Communities Health & Social Systems



Research-driven

System-driven

Spirit and attitude: «Mutual Learning for change»



It is not about creating or doing great things, but mainly about seeing and doing the ordinary things with the conviction, appreciation and joy of and for their basic intrinsic values

Thank you very much!



Mutual learning for change...I am deeply grateful to the stimulating and fruitful collaborations with all colleagues from:
Our institute, the Swiss and international scientific and public/global health community, our public and private partner institutions and populations in Europe, USA, Africa, Asia Australia and the Pacific...